

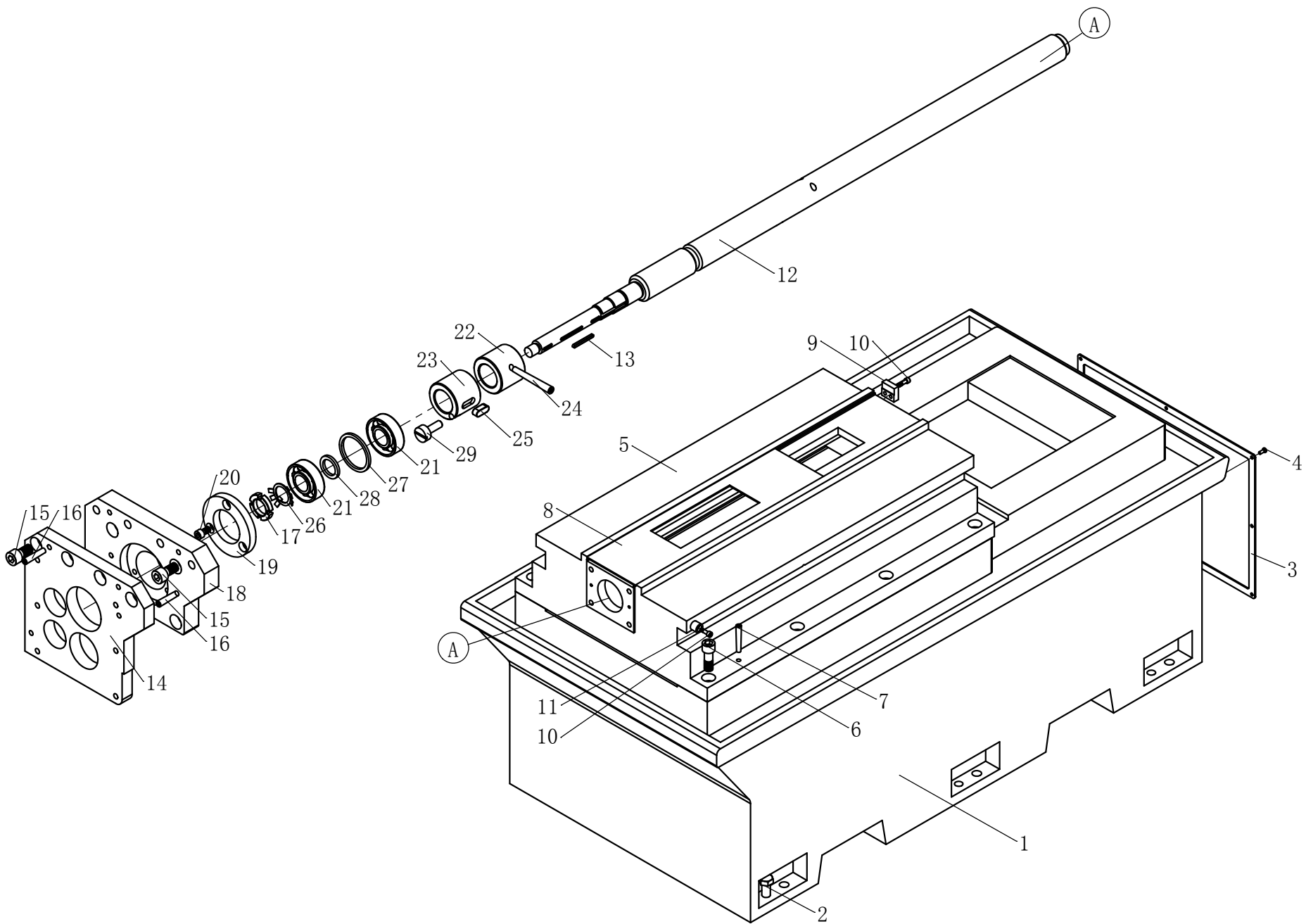
**XZ5150 Milling/Drilling Machine**

**EXPLOSION DIAGRAM**

# CONTENTS

- I. 01 Base part
- II. 02 Column part
- III. 03 Table part
- IV. 04 Feeding of table part
- V. 06 Headstock part
- VI. 09 10 Cooling & lubrication part

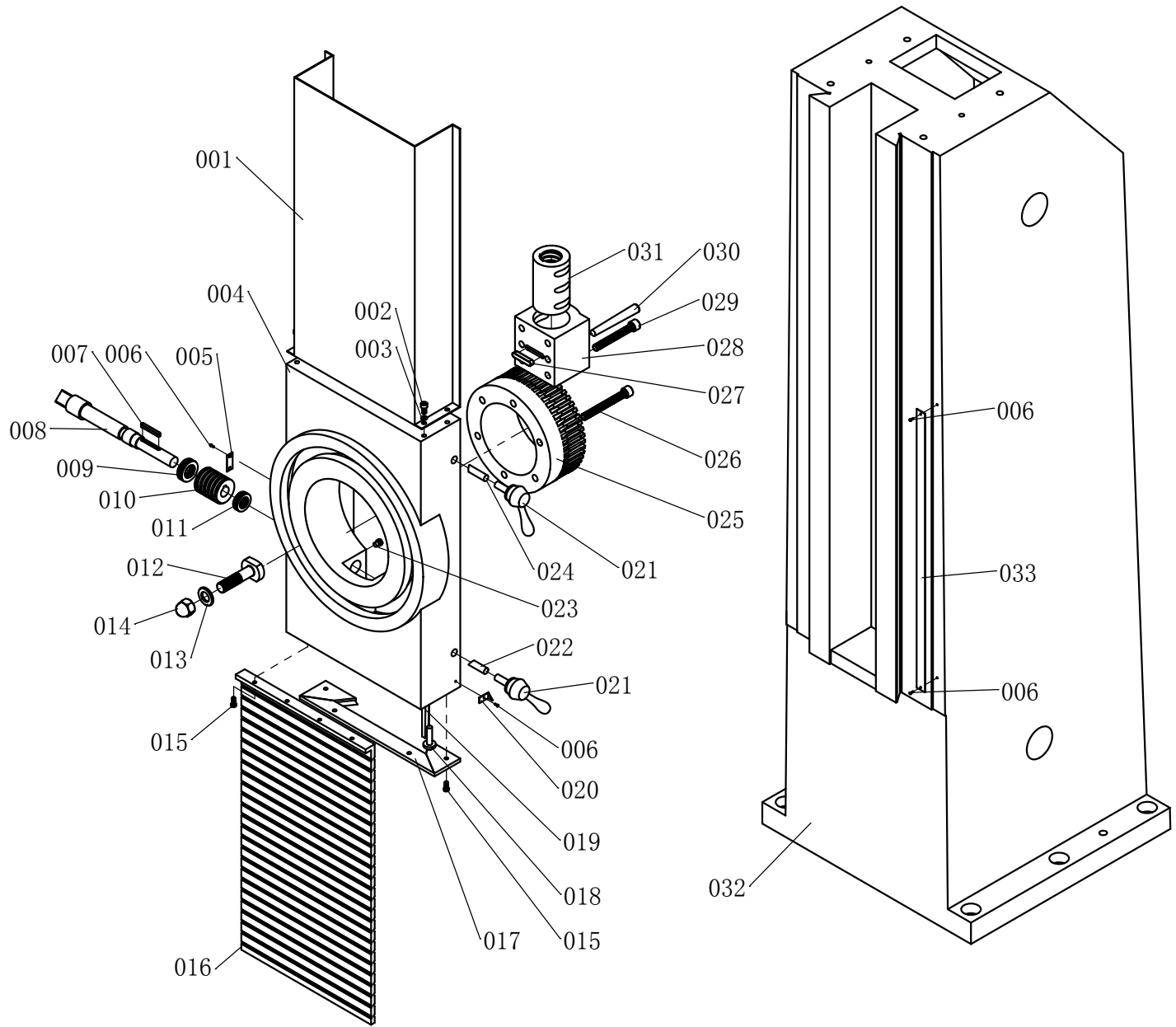
# 01 Base part



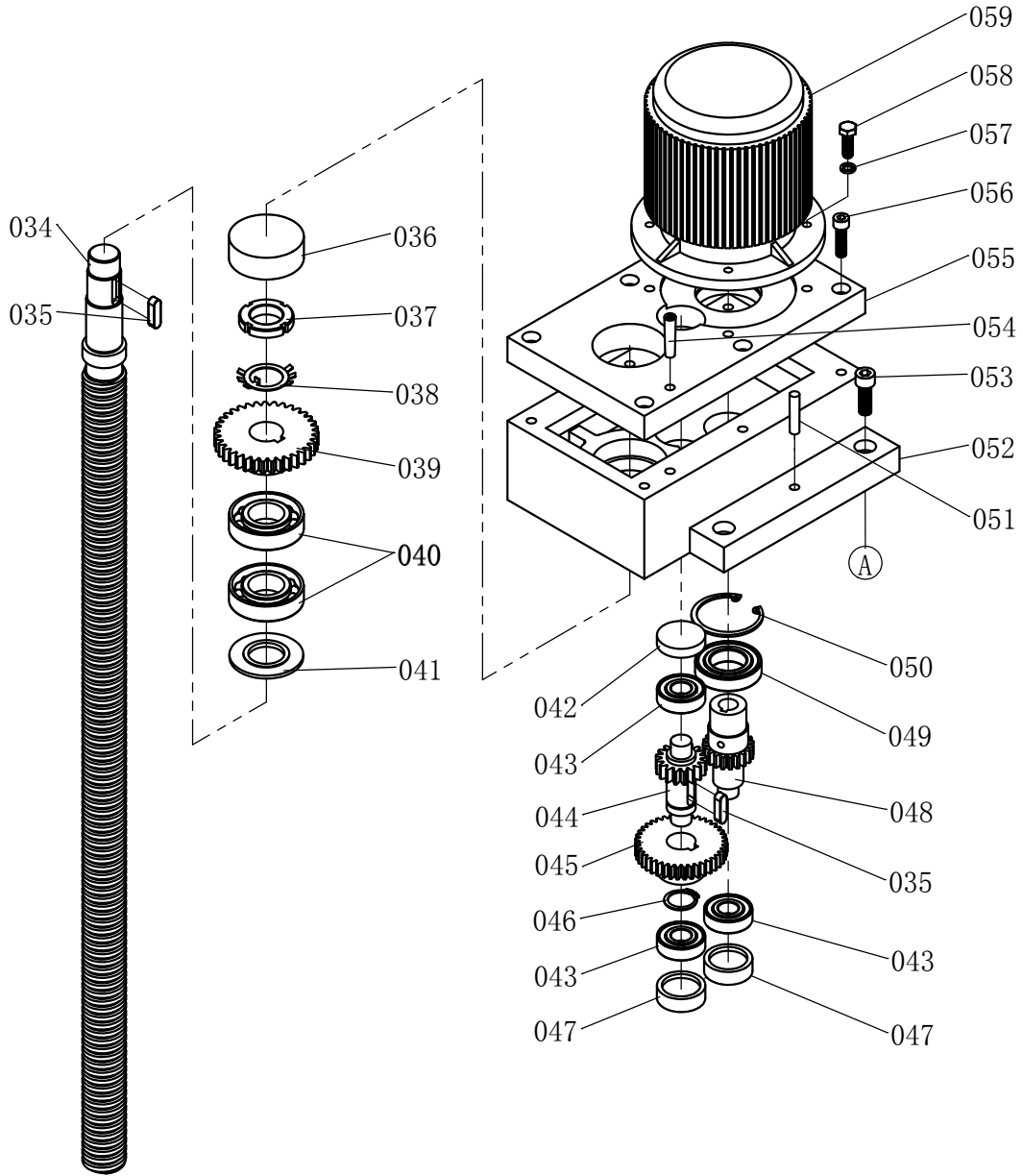
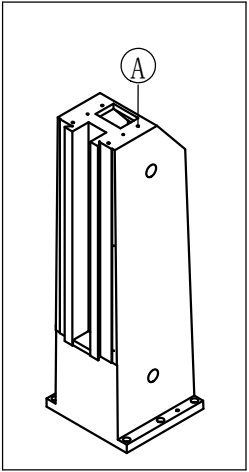
# 01 Base part

No.	Name	Qty
1	Base	1
2	GB/T5781 M16×35 Hex socket head cap screw	6
3	Cover	1
4	M5×12 Cross recessed countersunk screw	8
5	Base	1
6	M16×45 Hex socket head cap screw	8
7	8×60 Taper pin with internal thread	2
8	Board	1
9	Dog	1
10	M6×20 Hex socket head cap screw	7
11	Stopper	1
12	Lead screw	1
13	GB/T1096 3×32 Flat key	1
14	Cover	1
15	M10×20 Hex socket head cap screw	8
16	6×32 Taper pin with internal thread	4
17	M20×1.5 Nut	1
18	Cover	1
19	Gland	1
20	M6×12 Hex socket head cap screw	3
21	GB/T292 7204C Bearing	2
22	Nut	1
23	Nut	1
24	6×60 Taper pin with internal thread	1
25	GB/T1096 8×20 Flat key	1
26	GB/T818 20 Stopper	1
27	washer	1
28	washer	1
29	screw	1

# 02 Col umn Part



# 02 Coil umn Part



## 02 Column part

No.	Name	Qty
001	Shield	1
002	M6×12 Hexagon socket head cap screw	4
003	6 Spring washer	4
004	Slide saddle	1
005	Zero position card	1
006	2×6 Rivet	5
007	5×40 Flat key	1
008	Spindle	1
009	GB/T301 51104 20×35×10 Bearing	1
010	m=2.5 z=1γ=3.972 Worm	1
011	GB/T301 51103 17×30×9 Bearing	1
012	GB/T37 M16×65 Bolt	4
013	16 Plain washer	4
014	GB/T923 M16 Nut	4
015	M5×12 Slotted cheese head screw	8
016	Guard hangings	1
017	Wiper	1
018	Adjusting screw	2
019	Gib	1
020	Indicator drop	1
021	M12×58×25 Handlebar	2
022	Pressure block	1
023	M10×12 Slotted long cylindrical end set	1
024	Pressure block	1
025	m=2.5 z=70 Bevel gear	1
026	M10×90 Hexagon socket head cap screw	6
027	8×40 Flat key	1
028	Nut housing	1
029	M10×80 Hexagon socket head cap screw	4

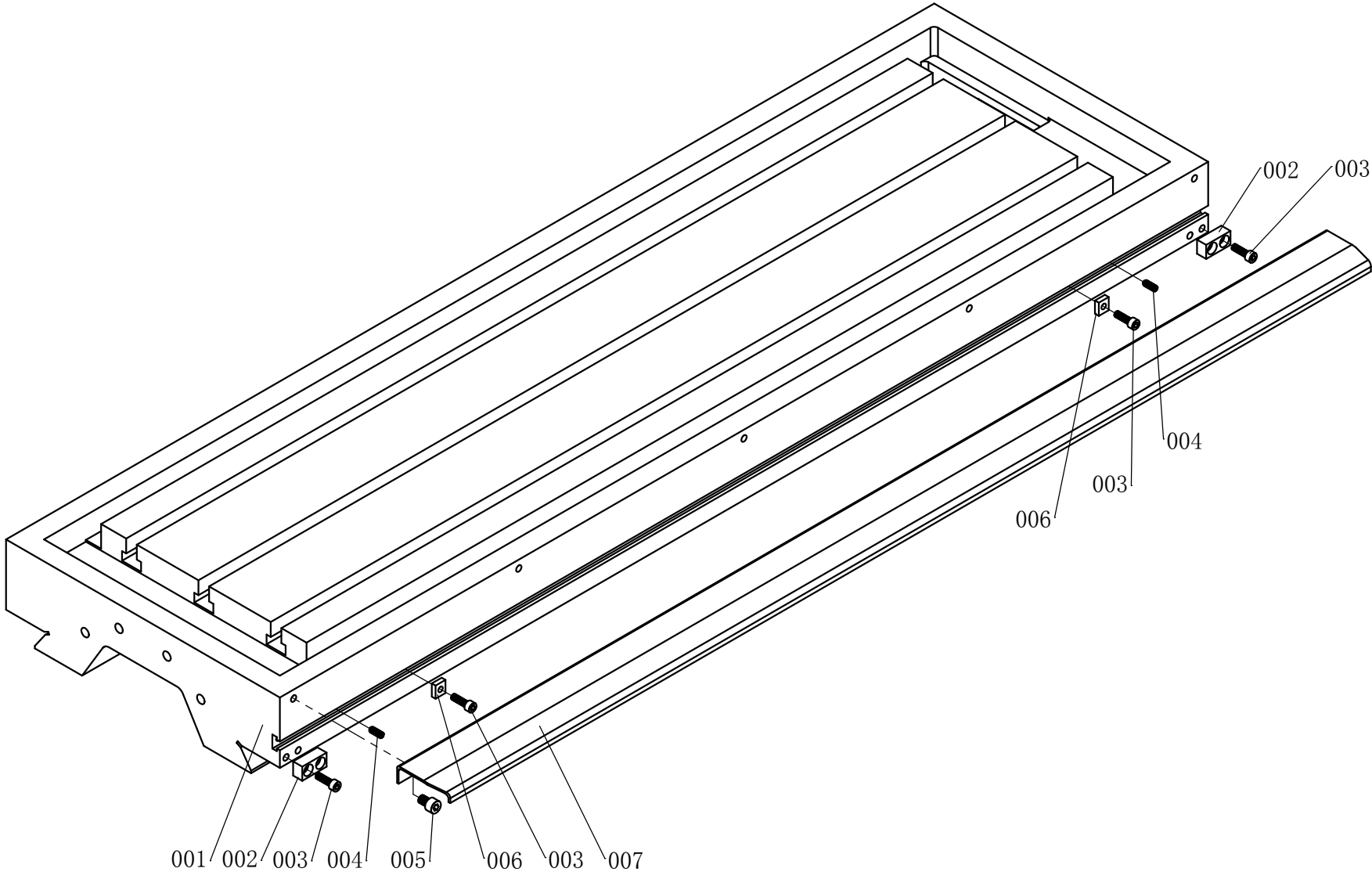
## 02 Column part

No.	Name	Qty
030	10×95 Taper pin with internal thread	2
031	Nut	1
032	Column	1
033	Scale	1
034	Lead screw	1
035	8×28 Flat key	2
036	Cover	1
037	M27×1.5 Round nut	1
038	GB/T858 27 Lock washer	1
039	m=2 z=41 Gear	1
040	GB/T292 7206AC 30×62×16 Bearing	2
041	Washer	1
042	Cover	1
043	GB/T276 6203 17×40×12 Bearing	3
044	m=2 z=19 Gear shaft	1
045	m=2 z=36 Gear	1
046	24 Circlip for shaft	1
047	Cover	2
048	m=2 z=19 Gear shaft	1
049	GB/T276 6006 30×55×13 Bearing	1
050	55 Circlip for hole	1
051	8×40 Taper pin	2
052	Gear-box	1
053	M10×30 Hexagon socket head cap screw	4
054	8×40 Taper pin with internal thread	2
055	Case cover	1
056	M8×30 Hexagon socket head cap screw	6
057	8 Spring washer	4
058	8×25 Hexagon bolt	4

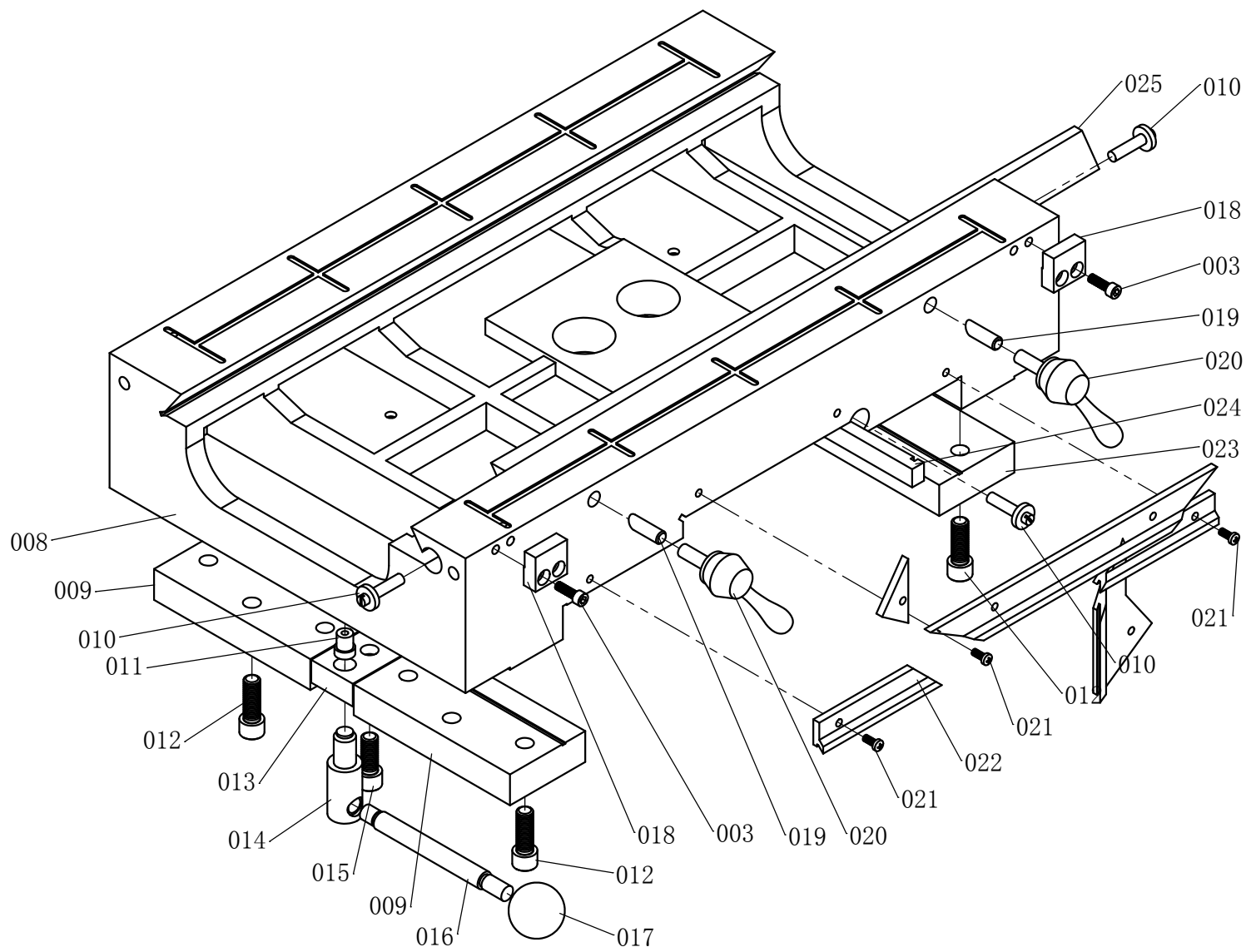




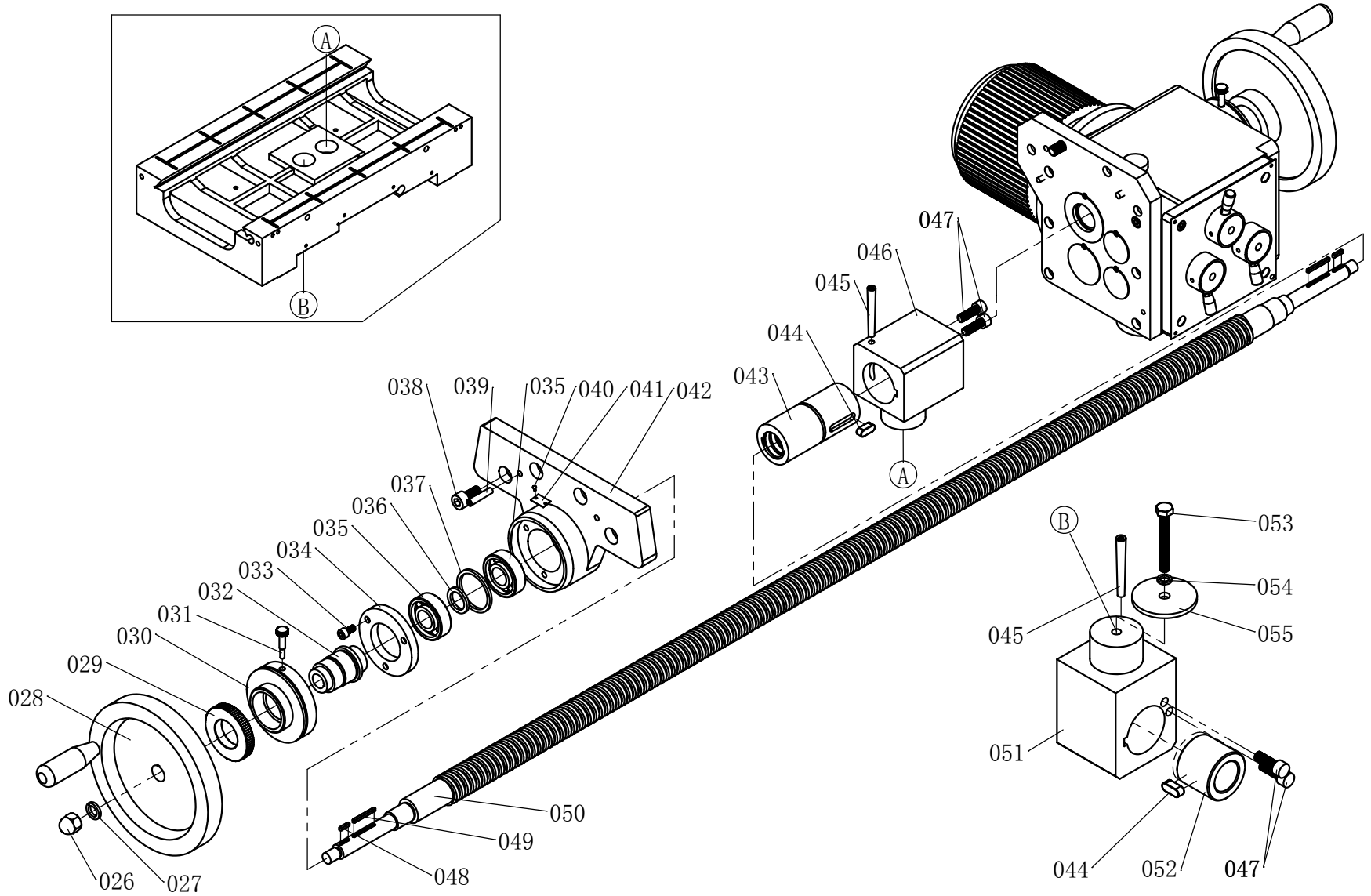
# 03 Table Part



# 03 Table Part



# 03 Table Part



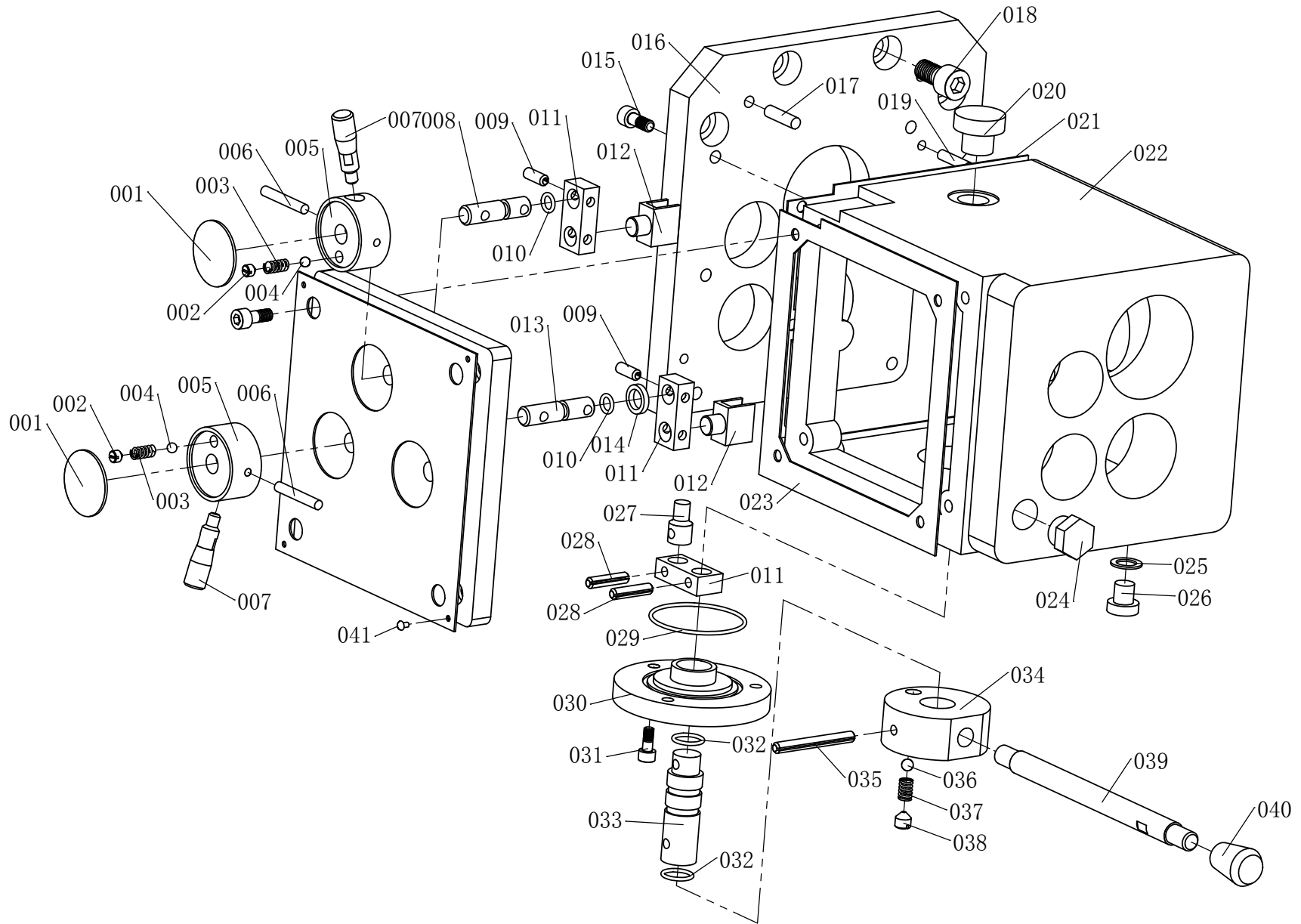
## 03 Table part

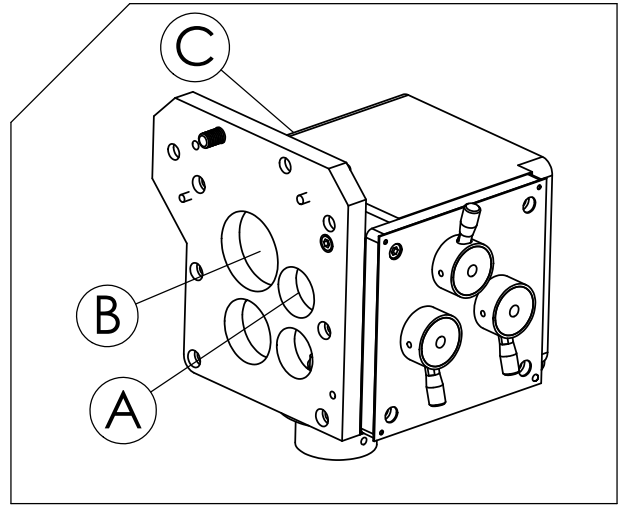
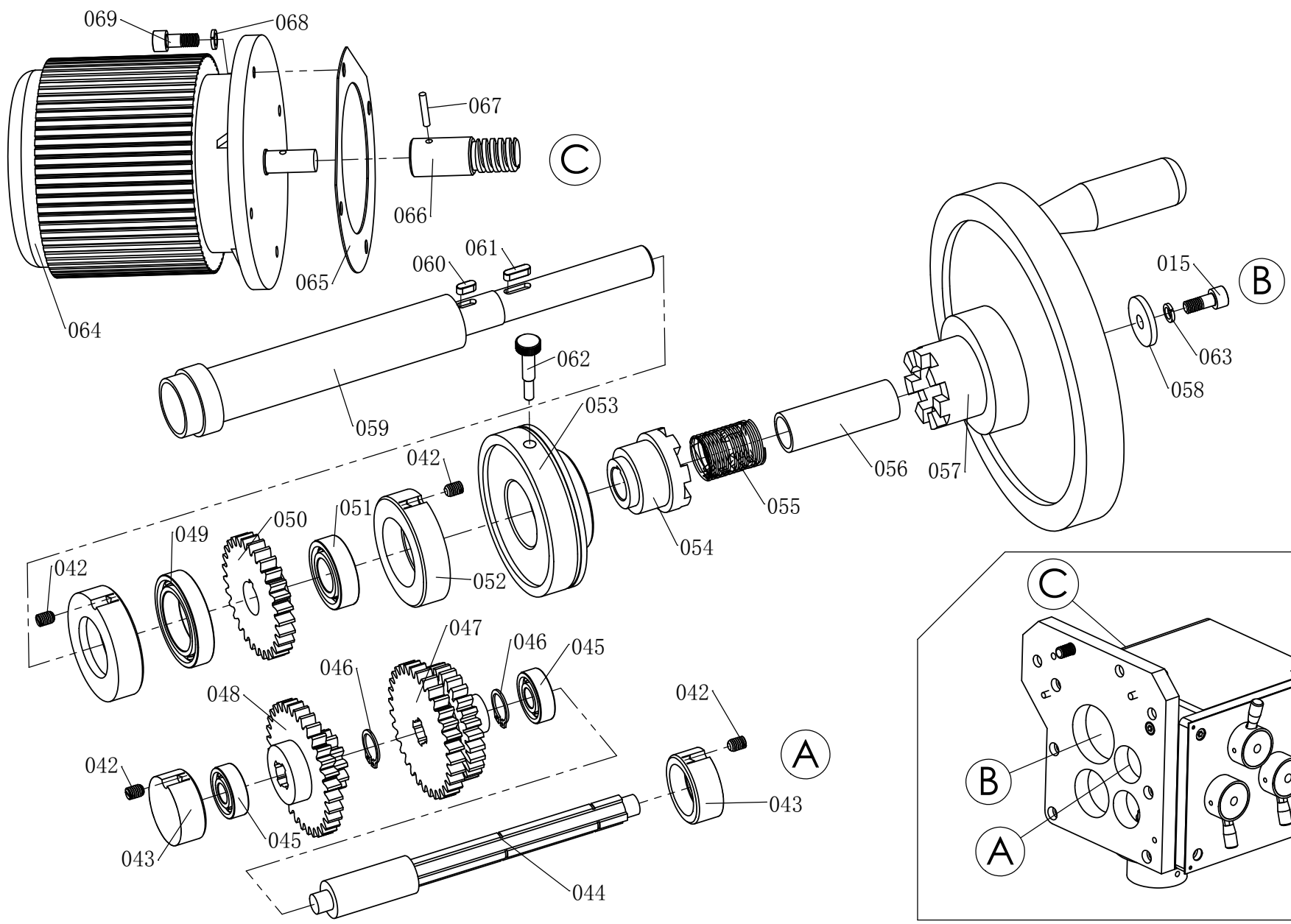
No.	Name	Qty
001	Table	1
002	Fixed stop dog	2
003	M6×20 Hexagon socket head cap screw	10
004	M6×16 Slotted taper end fixed screw	2
005	M8×12 Hexagon socket head cap screw	4
006	Screw base	2
007	Plate	1
008	Sliding saddle	1
009	Pressure plate	2
010	Adjusting screw	4
011	Pin	1
012	M12×35 Hexagon socket head cap screw	11
013	Pressure plate	1
014	Clamp bolt	1
015	M12×30 Hexagon socket head cap screw	1
016	Handlebar	1
017	Ball knob	1
018	Fixed stop dog	2
019	Pressure block	2
020	M12 Handle	2
021	M5×12 Cross recessed pan head screw	6
022	Wiper	2
023	Pressure plate	1
024	Short wedge	1
025	Long wedge	1
026	GB/T923 M12 Nut	1
027	12 Spring washer	1
028	Handwheel	1
029	Nut	1

## 03 Table part

No.	Name	Qty
030	Dial	1
031	Knurled screw	1
032	Distance sleeve	1
033	M6×12 Hexagon socket head cap screw	1
034	Gland	1
035	GB/T292 7204C 20×47×14 Bearing	2
036	28×20×3 Washer	1
037	47×40×3 Washer	1
038	M10×20 Hexagon socket head cap screw	4
039	6×32 Taper pin with internal thread	2
040	GB/T827 2×4 Rivet	2
041	Name plate	1
042	Left bracket	1
043	Nut	1
044	8×20 Flat key	2
045	6×60 Taper pin with internal thread	2
046	Nut housing	1
047	Bolt	4
048	3×14 Flat key	2
049	3×32 Flat key	2
050	Longitudinal lead screw	1
051	Nut housing	1
052	Nut	1
053	M8×20 Hexagon head bolt	1
054	8 Spring washer	1
055	55×9×4 Washer	1

# 04 Feed of Table Part

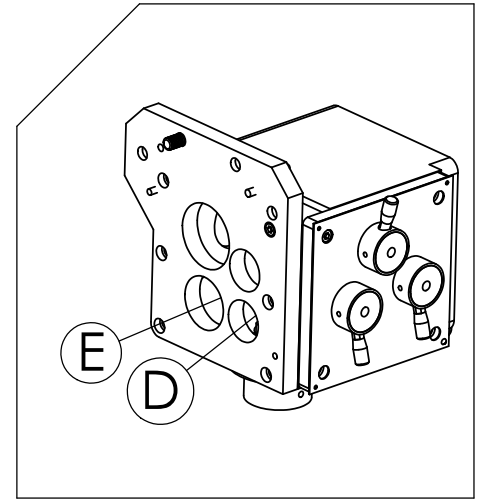
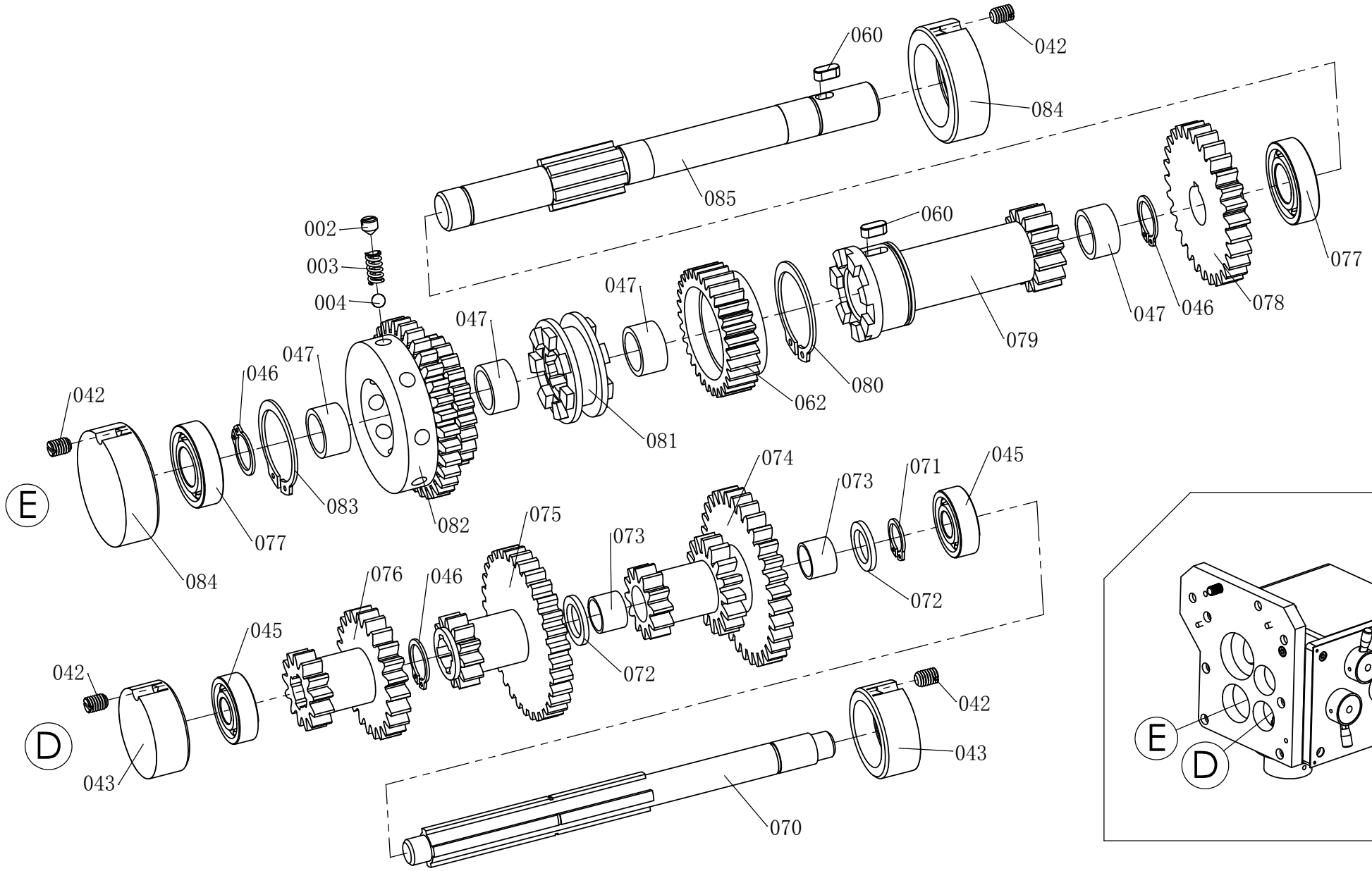




# 04 Feed of Table Part



# 04 Feed of Table Part



## 04 Feed of Table Part

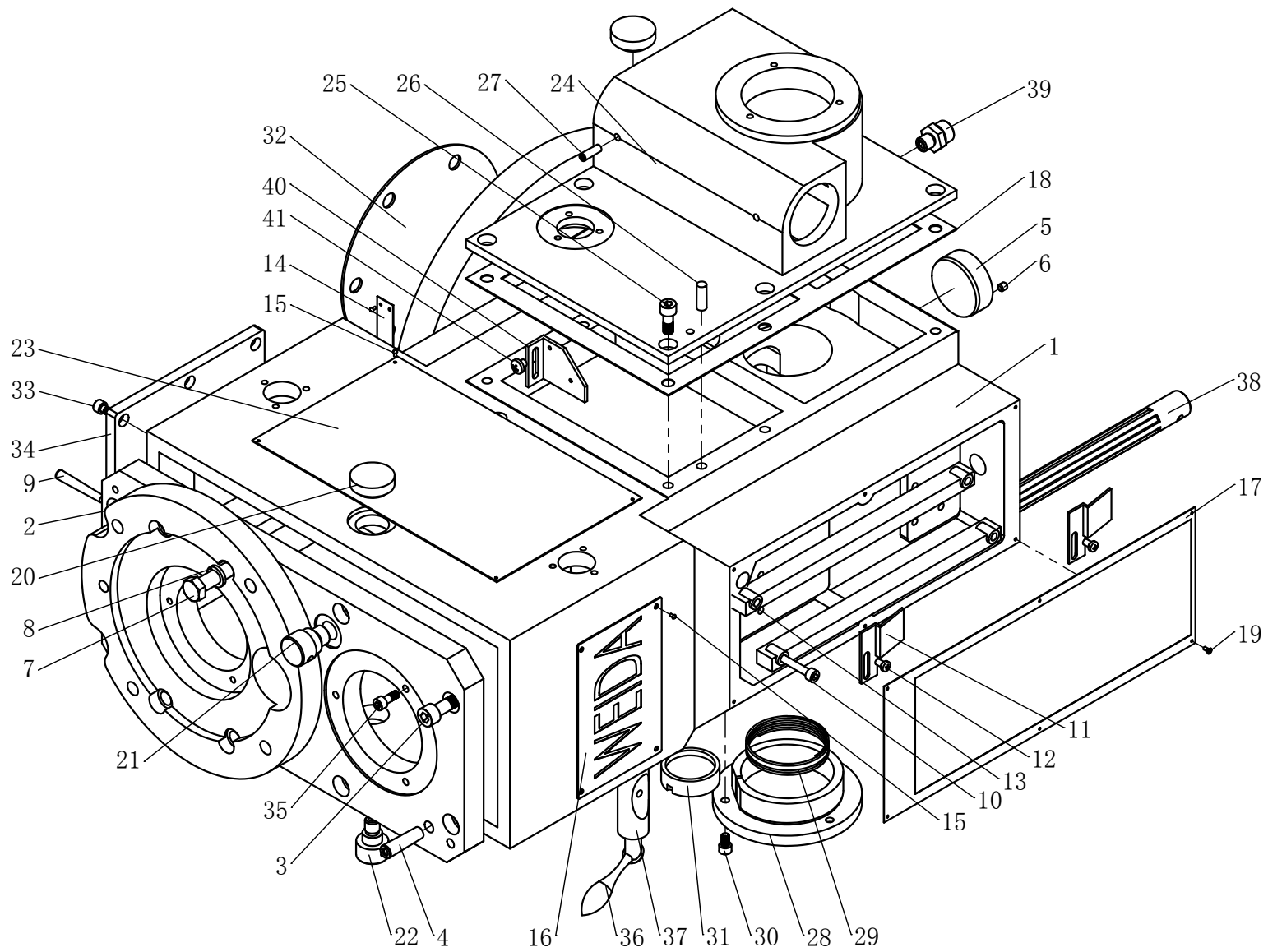
No.	Name	Qty
04001	Indicator drop	3
04002	M6x6 Setscrew with slotted taper end	12
04003	GB/T2089 1×5×12 Spring	3
04004	GB/T308 5 Steel ball	12
04005	Handle seat	3
04006	GB/T117 5×35 Taper bolt	3
04007	Handle lever	3
04008	Shaft	2
04009	GB/T879.1 5×16 Elastic cylindrical pin	3
04010	GB/T3452.1 6.9×1.8 O-ring	3
04011	Connecting plate	3
04012	Shifting fork	3
04013	Shaft	1
04014	15×10.5×3 Washer	1
04015	M6x15 Hex Socket head bolt	10
04016	Side plate	2
04017	GB/T117 6×24 Taper bolt	2
04018	M10x20 Hex Socket head bolt	4
04019	GB/T117 5×24 Taper bolt	2
04020	M16×1.5 Oil plug	1
04021	Seal ring	1
04022	Box	1
04023	Seal ring	1
04024	Oil gage	1
04025	Aluminum washer	1
04026	JB/T7941.2 M10×1 Oil plug	1
04027	Shaft	1
04028	GB/T879.1 5×25 Elastic cylindrical pin	2
04029	GB/T3452.1 46.2×1.8 O-ring	1

## 04 Feed of Table Part

No.	Name	Qty
04030	Gland	1
04031	M5×12 Hex Socket head bolt	7
04032	GB/T3452.1 13.2×2.65 O-ring	1
04033	Shaft	1
04034	Handle	13
04035	GB/T879.1 5×50 Elastic cylindrical pin	1
04036	GB/T308 6 Steel ball	1
04037	GB/T2089 1×6×10 Spring	1
04038	M8×8 Setscrew with slotted taper end	1
04039	Handle lever	1
04040	Taper knob	1
04041	GB/T827 2.5×4 Rivet	4
04042	M6×6 Setscrew with slotted taper end	1
04043	Bearing housing	4
04044	Spline shaft	1
04045	GB/T276 6000 10×16×8 Bearing	1
04046	GB/T894.1 15 Circlip for shaft	4
04047	m=2 z <sub>1</sub> =32 z <sub>2</sub> =28 Gear	1
04048	m=2 z <sub>1</sub> =32 z <sub>2</sub> =12 Gear	1
04049	GB/T61906 30×47×9 Bearing	1
04050	m=2 z=29 Gear	1
04051	GB/T6003 17×35×10 Bearing	1
04052	Bearing housing	1
04053	Dial	1
04054	Clutch	1
04055	GB/T2089 1×22×30 Spring	1
04056	Sheath	1
04057	Handwheel	1
04058	25×7×3 Washer	1

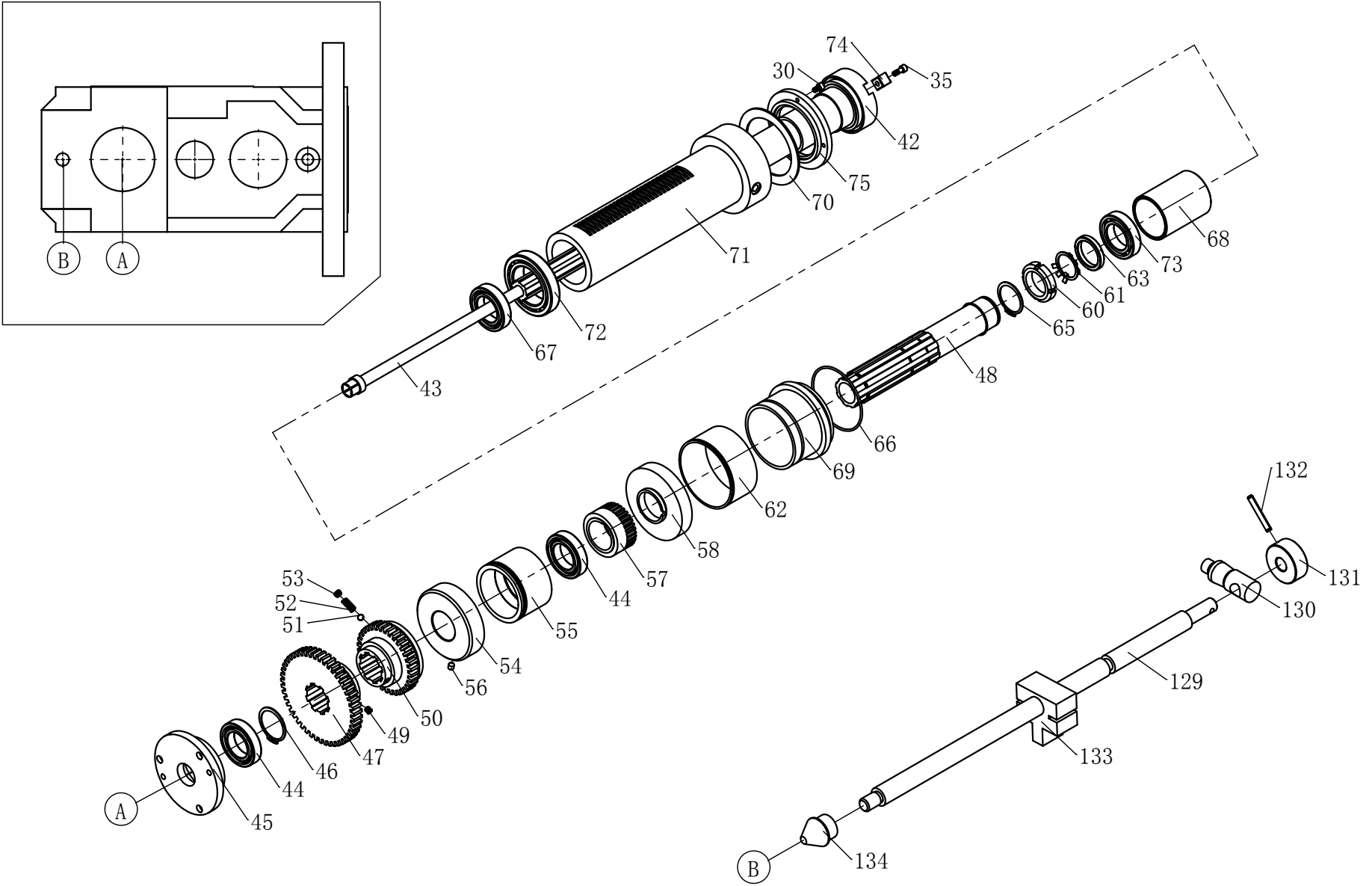
## 04 Feed of Table Part

No.	Name	Qty
04059	Shaft	1
04060	4x10 Flat key	2
04061	4x14 Flat key	1
04062	m=1.5 z=31 Knurled screw	1
04063	6 Spring washer	1
04064	370W 2800rpm Electromotor	2
04065	Seal ring	1
04066	Worm	1
04067	GB/T117 5×35 Taper bolt	1
04068	8 Spring washer	1
04069	M8x20 Hex Socket head bolt	6
04070	Spline shaft	1
04071	GB/T894.1 12 Circlip for shaft	1
04072	19×13×2 Washer	1
04073	Sliding bearing	2
04074	m=2 z <sub>1</sub> =12 z <sub>2</sub> =16 z <sub>3</sub> =32 Triple gear	1
04075	m=2 z <sub>1</sub> =12 z <sub>2</sub> =32 Gear	1
04076	m=2 z <sub>1</sub> =13 z <sub>2</sub> =23 Gear	1
04077	GB/T276 15x32x9 Bearing	2
04078	m=2 z=29 Gear	1
04079	m=2 z=14 Gear shaft	1
04080	GB/T894.1 32 Circlip for shaft	1
04081	Clutch	1
04082	m=2 z <sub>1</sub> =23 z <sub>2</sub> =33 Gear	1
04083	GB/T894.1 30 Circlip for shaft	1
04084	Bearing housing	2
04085	Shaft	1

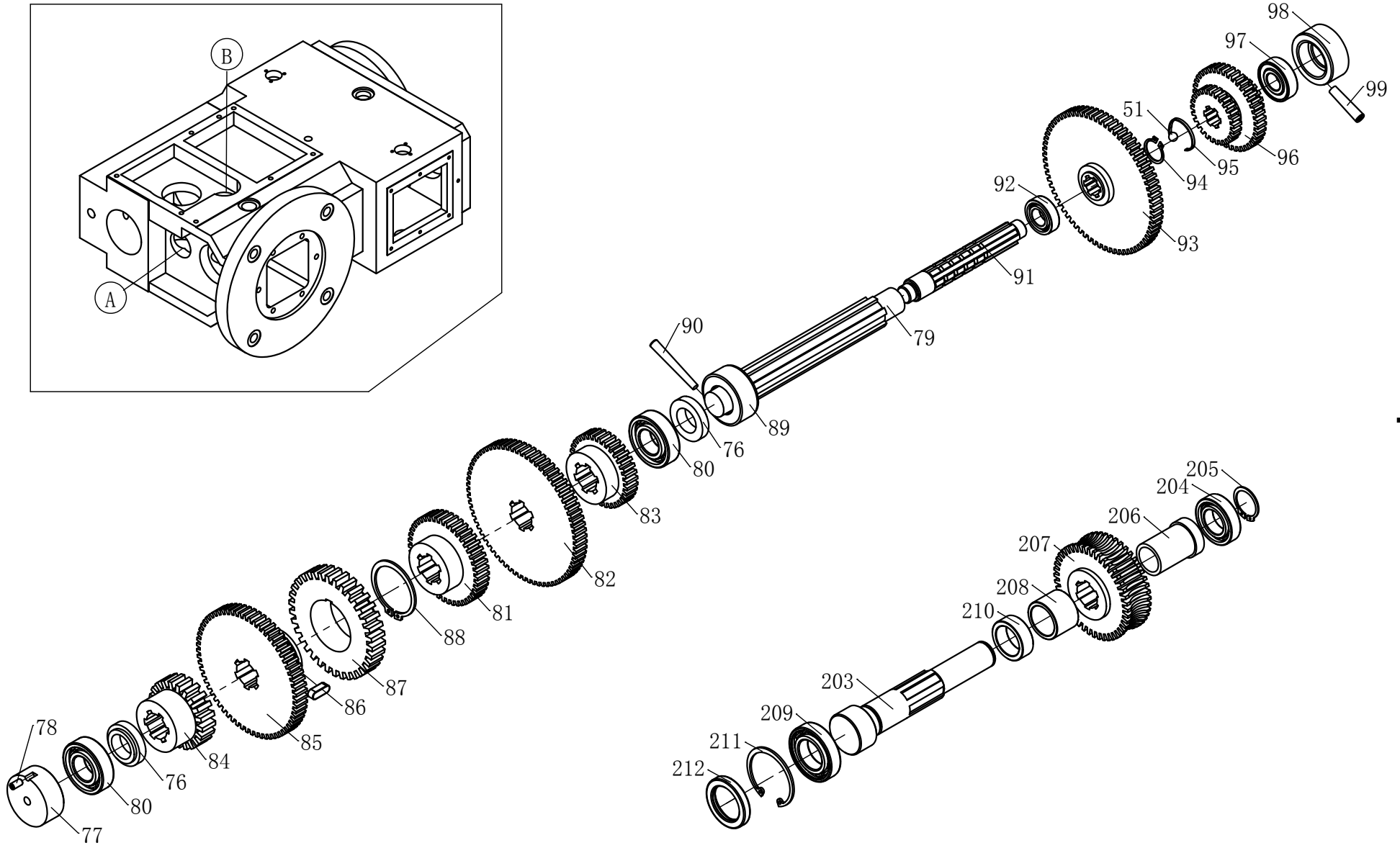
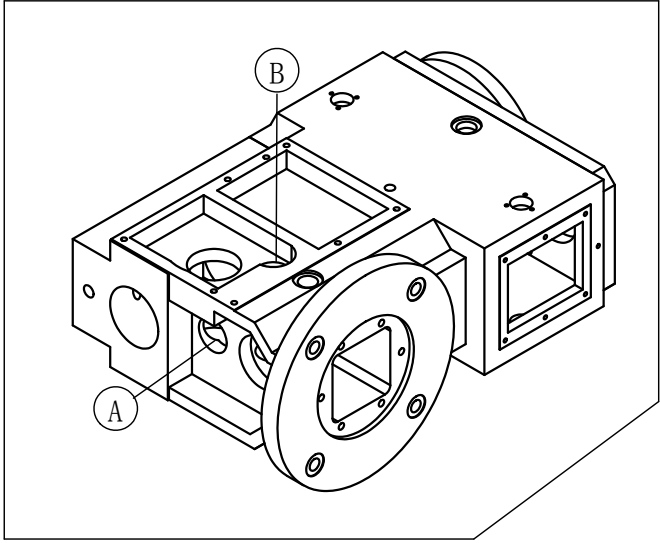


# 06 Headstock part

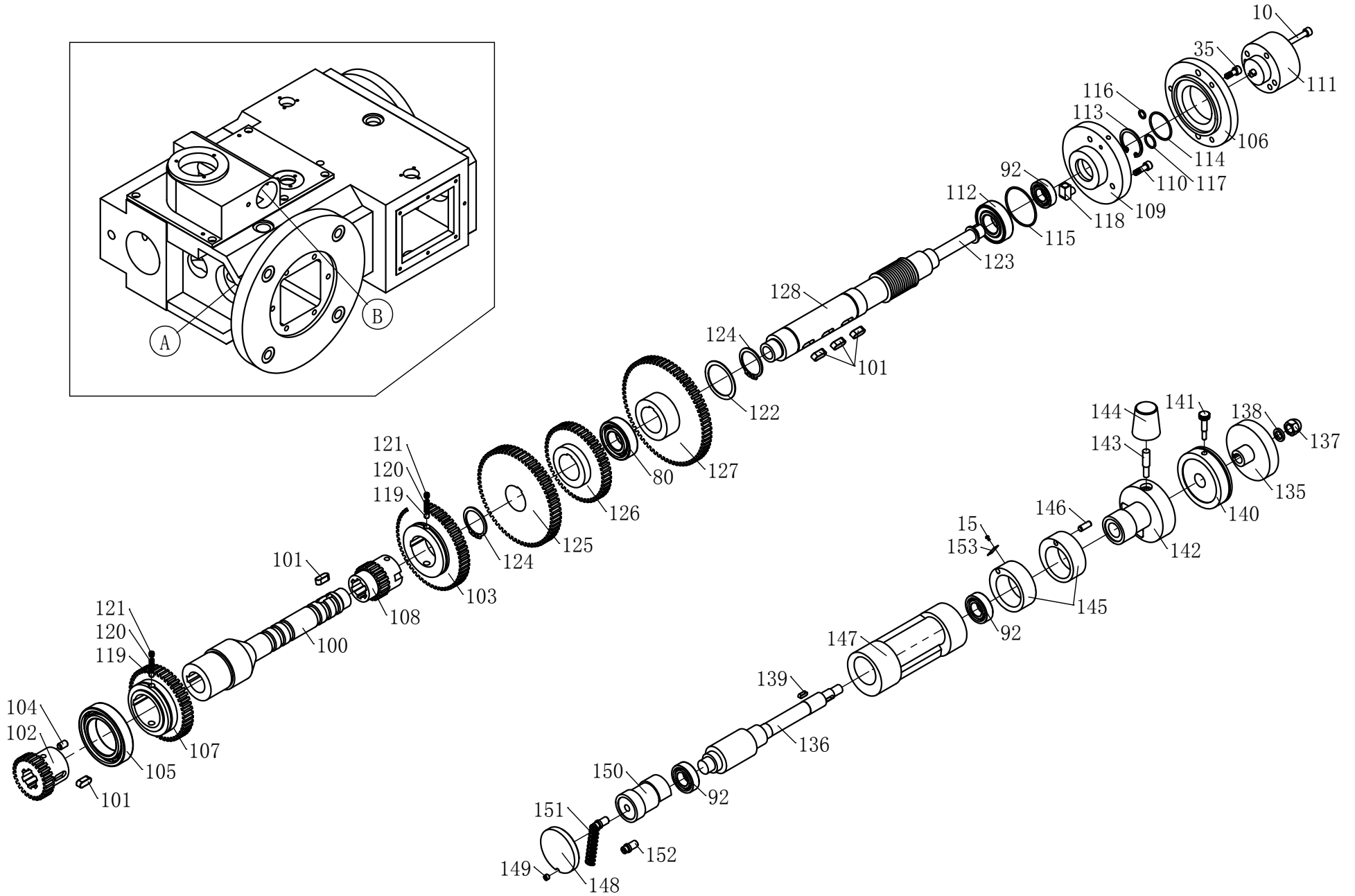
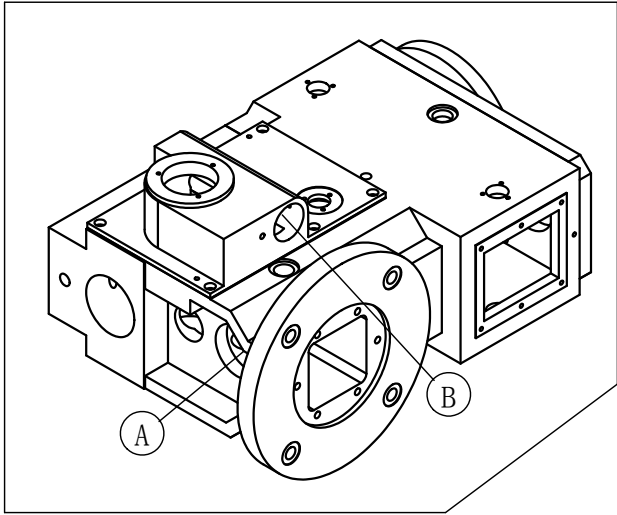
# 06 Headstock part



# 06 Headstock part

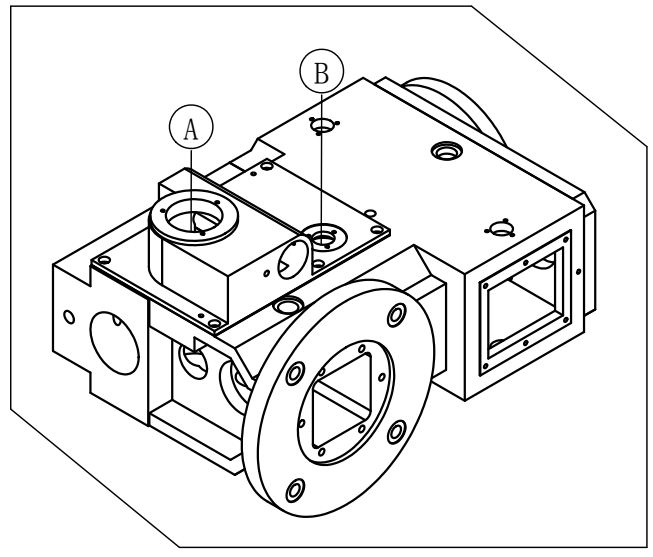
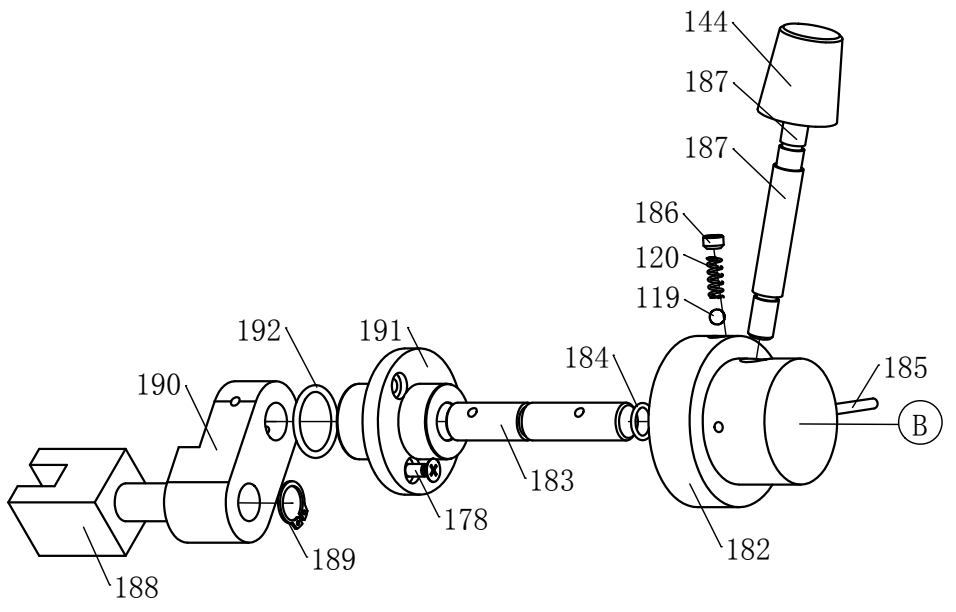
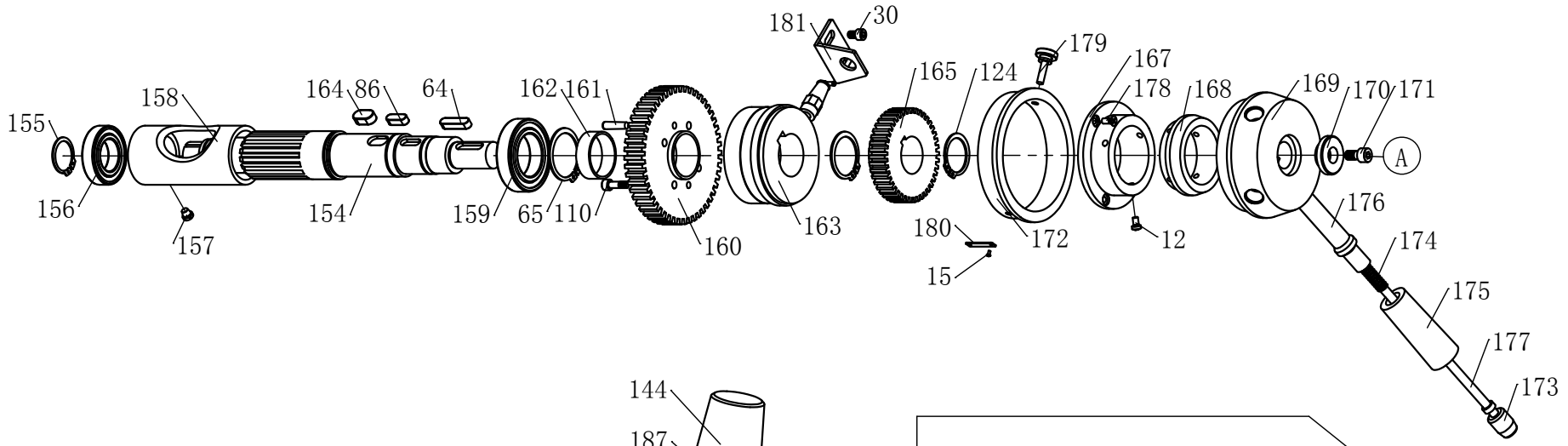


# 06 Headstock part

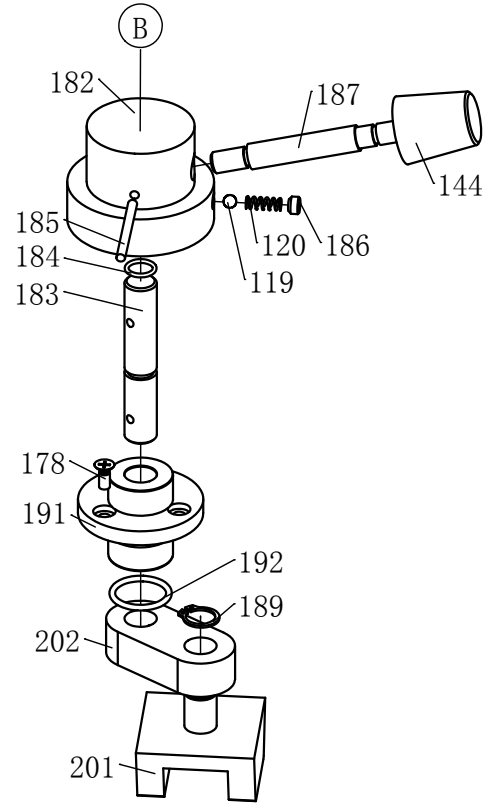
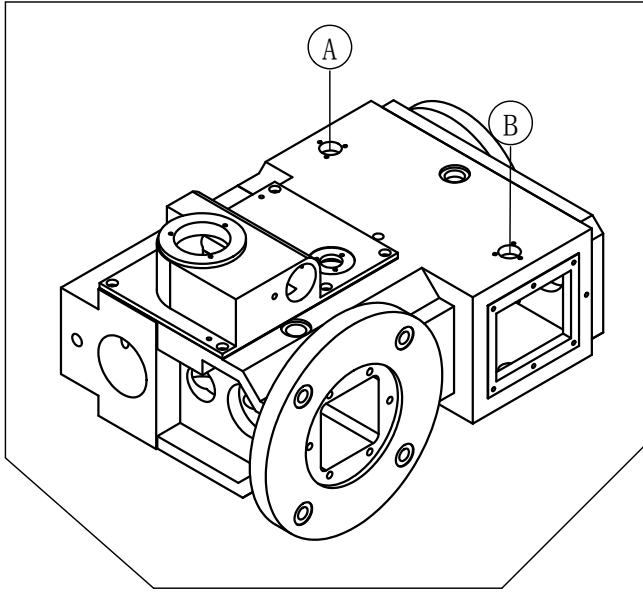
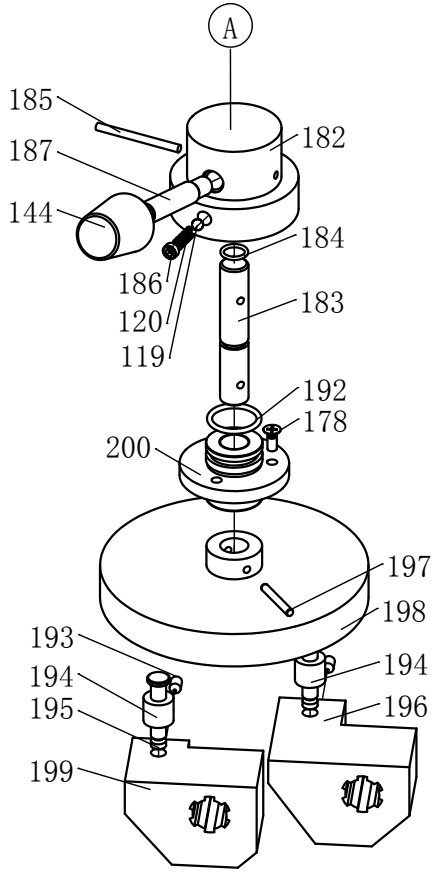




# 06 Headstock part



# 06 Headstock part



## 06 Headstock part

No.	Name	Qty
1	Headstock	1
2	Cover	1
3	M10×30 Hexagon socket head cap screw	1
4	M10×40 Taper pin with internal thread	1
5	Cover	1
6	M6×6 Hexagon socket flat end set screw	1
7	GB/T5870 M12×35 Hexagon bolt	1
8	GB/T93 12 Spring washer	1
9	M6×50 Taper pin with internal thread	1
10	M6×40 Hexagon socket head cap screw	2
11	Bracket	2
12	M5×8 Cross recessed pan head screw	3
13	Guidewqy	2
14	Scutcheon	1
15	GB/T827 2×4 Rivet	5
16	Scutcheon	1
17	Scutcheon	1
18	Washer	1
19	M2.5×6 Cross recessed countersunk flat head screw	1
20	JB/T7941.2 Oil scale	2
21	Oil plug	1
22	M16×1.5 Oil plug	1
23	Scutcheon	1
24	Side cover	1
25	M8×20 Hexagon socket head cap screw	1
26	M8×25 Taper pin	1
27	M6×20 Taper pin with internal thread	1
28	Spring box	1
29	Coil spring	1

## 06 Headstock part

No.	Name	Qty
30	M6×10 Hexagon socket head cap screw	3
31	Plug	1
32	Plate	1
33	M6×12 Hexagon socket head cap screw	1
34	Cover plate	1
35	M6×16 Hexagon socket head cap screw	3
36	Handle bar	1
37	Tight block	1
38	Spline housing	1
39	Connector	1
40	Supporting plate	1
41	M6×6 Cross recessed pan head screw	1
42	Spindle	1
43	Draw bar	1
44	GB/T276 6009/P6 45×75×16 Bearing	2
45	Bearing housing	1
46	48 Circlip for shaft	1
47	m=3 z=47 Gear	1
48	Spline housing	1
49	M8×8 Slotted flat end set screw	1
50	m=3 z=34 Gear	1
51	8 Steel ball	2
52	GB/T2089 1.2×6.5×16 Compressed spring	1
53	M10×6 Slotted flat end tight screw	1
54	Collar	1
55	Bearing housing	1
56	M8×10 Hexagon socket taper end set screw	1
57	m=2 z=32 Gear	1
58	Collar	1

## 06 Headstock part

No.	Name	Qty
59	GB/T3452.1 46.2×1.8 O-ring seal	1
60	Nut	1
61	GB/T858 35 Lock washer	1
62	Collar	1
63	Washer	1
64	GB/T1096 8×32 Fat key	2
65	45 Circlip for shaft	2
66	GB/T3452.1 95×2.65 O-ring seal	1
67	GB/T276 6008/P6 40×68×15 Bearing	1
68	60×68×90 Collar	1
69	Collar	1
70	90.2 Washer	1
71	Quill	1
72	GB/T297 32012/P5 60×95×23 Bearing	1
73	GB/T292 7008AC/P5 40×68×15 Bearing	1
74	Key	1
75	Cover	1
76	Washer	2
77	Cover	1
78	M6×12 Hexagon socket flat end set screw	1
79	Spline shaft	1
80	GB/T276 6205/P6 25×52×15 Bearing	3
81	m=2 z=43 Gear	1
82	m=2 z=70 Gear	1
83	m=2 z=35 Gear	1
84	m=3 z=21 Gear	1
85	m=2 z=63 Gear	1
86	8×22 Key	2
87	m=3 z=34 Gear	1

## 06 Headstock part

No.	Name	Qty
88	52 Circlip for shaft	1
89	Bearing housing	1
90	M6×60 Taper pin with internal thread	1
91	Spline shaft	1
92	GB/T276 6003 17×35×10 Bearing	4
93	m=2 z=70 Gear	1
94	22 Circlip for shaft	1
95	Circlip	1
96	$m_{123}=2$ $z_1=26$ $z_2=40$ $z_3=20$ Gear	1
97	GB/T276 6203-Z 17×40×12 Bearing	1
98	Bearing housing	1
99	M8×40 Taper pin with internal thread	1
100	Spline shaft	1
101	8×20 Key	5
102	m=2 z=27 Gear	1
103	m=2 z=56 Gear	1
104	M8×12 Hexagon socket flat end tight screw	1
105	GB/T276 6010/P6 Bearing	1
106	Flange	1
107	m=2 z=47 Gear	1
108	m=2 z=21 Gear	1
109	Bearing housing	1
110	M6×20 Hexagon socket head cap screw	2
111	0.84W Oil pump	1
112	GB/T276 6205-Z 25×52×15 Bearing	1
113	35 Circlip for hole	1
114	GB/T3452.1 34.5×1.8 O-ring seal	1
115	GB/T3452.1 50×1.8 O-ring seal	1
116	GB/T3452.1 8×1.8 O-ring seal	1

## 06 Headstock part

No.	Name	Qty
117	GB/T3452.1 15×1.8 O-ring seal	1
118	Connector	1
119	6 Steel ball	5
120	GB/T2089 1×5×16 Compressed spring	5
121	GB/T73 M8×6 Slotted flat end set screw	2
122	52×42×1 Washer	1
123	Leader	1
124	35 Circlip for shaft	3
125	m=2 z=64 Gear	1
126	m=2 z=50 Gear	1
127	m=2 z=70 Gear	1
128	m=2 z=1 $\alpha=20^\circ$ Worm	1
129	Worm	1
130	Connector	1
131	Handle bar	1
132	GB/T879.4 4×28 Cylinder pin	1
133	Sliding block	1
134	Dog	1
135	12×100 Hand wheel	1
136	m=2 z=1 $\alpha=20^\circ$ Worm	1
137	M10 Nut	1
138	10 Spring washer	1
139	4×12 Key	1
140	Dial	1
141	Knurled screw	1
142	Collar	1
143	Handle bar	1
144	M6×36 Grip	4
145	Eccentric sleeve	2

## 06 Headstock part

No.	Name	Qty
146	A6×16 Taper pin with internal thread	1
147	Eccentric sleeve	1
148	Plug	1
149	M6×6 Slotted taper end tight screw	1
150	Cam shaft	1
151	Spring	1
152	Screw	2
153	Indicator drop	1
154	m=2.5 z=16 Gear shaft	1
155	30 Circlip for shaft	1
156	GB/T276 6006-Z 30×55×13 Bearing	1
157	M10×12 Slotted taper end set screw	1
158	Seal	1
159	GB/T276 6009-Z 45×75×16 Bearing	1
160	m=2.5 z=50 Gear	1
161	M6×26 Taper pin with internal thread	1
162	Collar	1
163	Clutch	1
164	12×22 Key	1
165	m=2 z=42 $\alpha=20^\circ$ Bevel gear	1
166	40 Circlip for shaft	1
167	Bracket	1
168	Slip ring	1
169	Handle bar housing	1
170	Cover	1
171	M8×16 Hexagon socket head cap screw	1
172	Dial ring	1
173	Pushbutton	1
174	1×10×30 Compressed spring	1



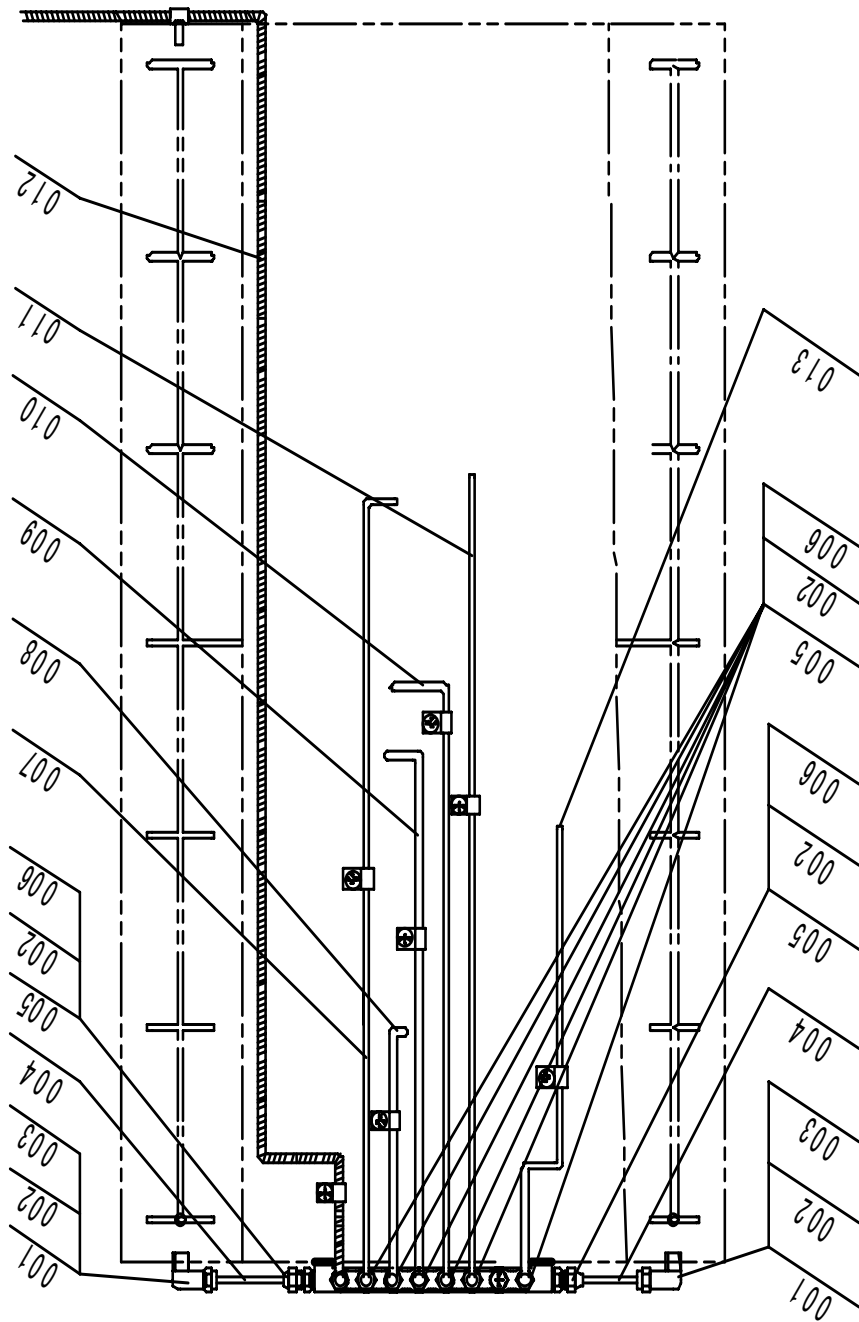
## 06 Headstock part

No.	Name	Qty
175	Grip	1
176	Handle bar	1
177	Leader	1
178	M5×12 Cross recessed countersunk flat head screw	4
179	Knurled screw	1
180	Scutcheon	1
181	Supporting plate	1
182	Handle bar	3
183	Shaft	3
184	GB/T3452.1 11.2×1.8 O-ring seal	3
185	M4×50 Taper pin	3
186	M8×5 Hexagon socket flat end set screw	3
187	Handle bar	3
188	Shifting fork	1
189	15 Circlip for shaft	2
190	Rocker arm	1
191	Collar	2
192	GB/T3452.1 23.6×2.65 O-ring seal	3
193	M6×10 Hexagon socket taper end set screw	2
194	Idler wheel	2
195	Shaft	2
196	shifting fork	1
197	M4×30 Taper pin	2
198	Cam	1
199	Shifting fork	1
200	Collar	1
201	Shifting fork	1
202	Rocker-arm	1
203	Gear shaft	1

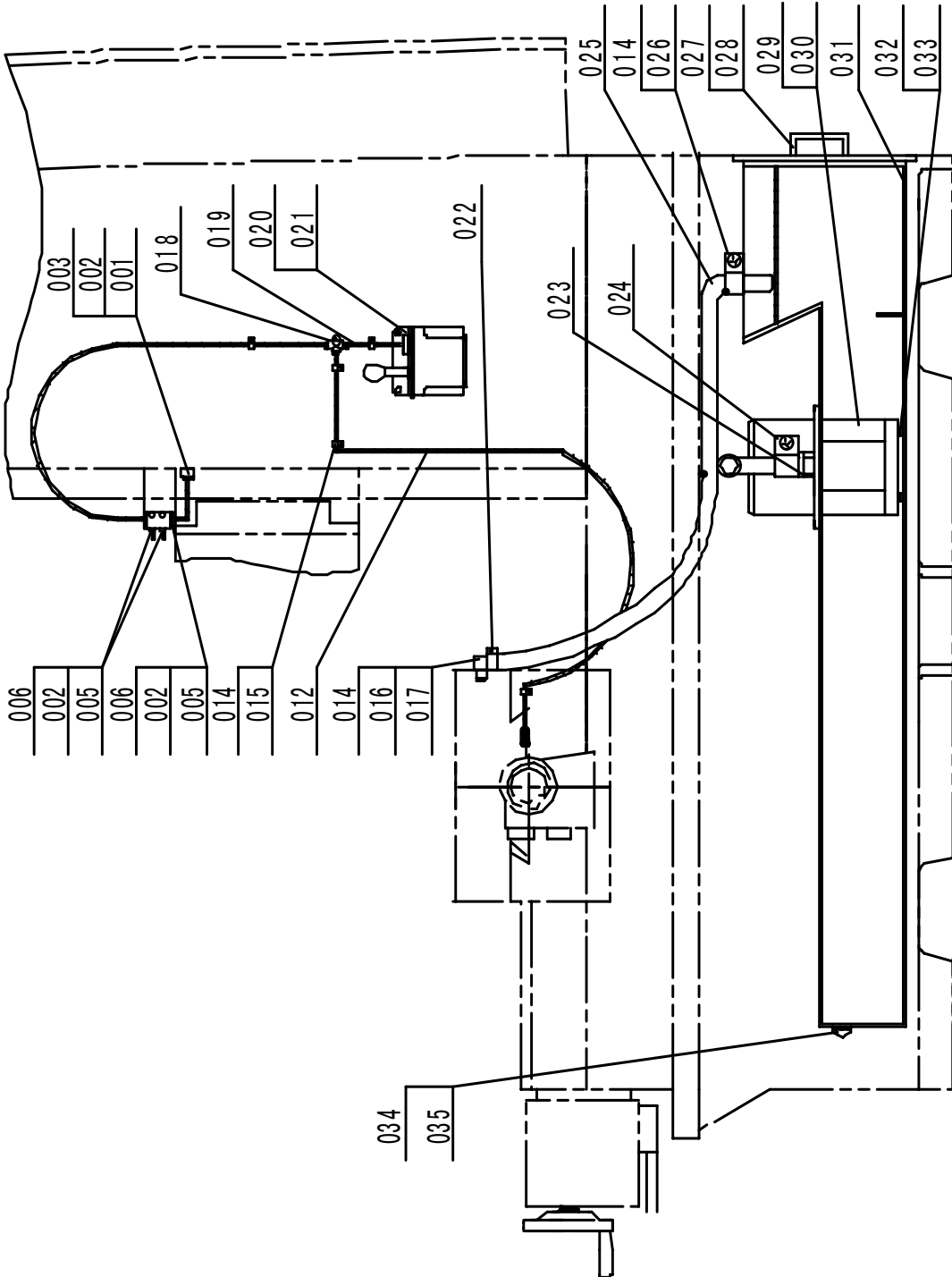
## 06 Headstock part

No.	Name	Qty
204	GB/T276 6005 25×47×12 Bearing	1
205	25 Circlip for shaft	1
206	Collar	1
207	m=2 z=44 Worm wheel	1
208	Collar	1
209	GB/T276 6006-RS 30×55×13 Bearing	1
210	Collar	1
211	55 Circlip for hole	1
212	GB/T1387 FB04055 40×55×8 Seal	1

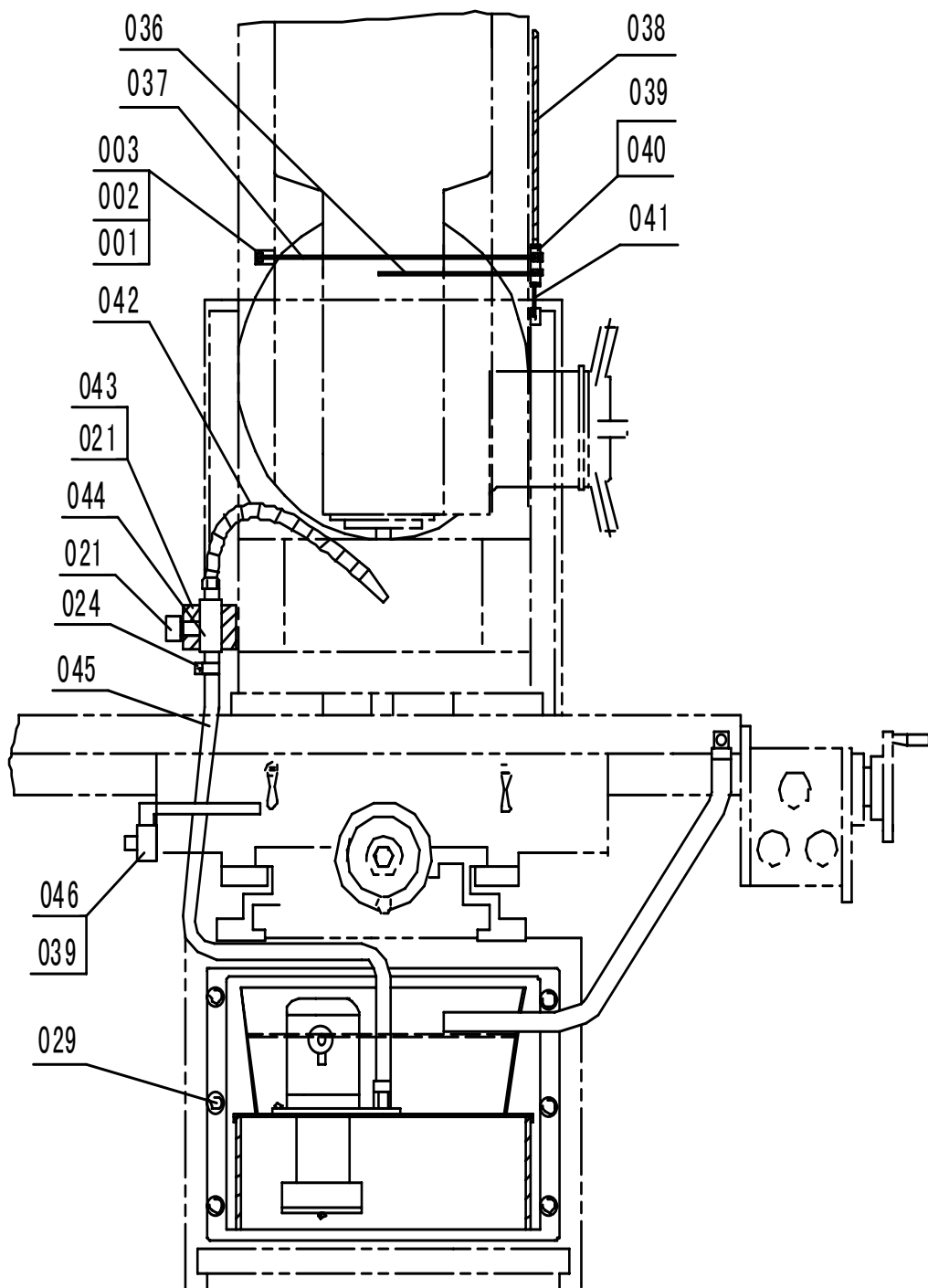
# 09 10 Cooling & lubricating parts



# 9 10 Cooling & lubricating parts



# 9 10 Cooling & lubricating part



## 09 10 Cooling & lubricating parts

No	Name	Oty
001	M8×1 Connector	4
002	φ 6× φ 4.1 Sleeve	20
003	φ 4.2- M8×1 Connector	5
004	φ 4×200 Copper pipe	1
005	M8×1- φ 4.2 Nut	12
006	Gauge	11
007	φ 4×580 Copper pipe	1
008	φ 4×260 Copper pipe	1
009	φ 4×300 Copper pipe	1
010	φ 4×550 Copper pipe	1
011	φ 4×330 Copper pipe	1
012	φ 4 ( M8×1 ) × 1600 Oil pipe	2
013	φ 4×380 Copper pipe	1
014	M5×8 Cross recessed pan head screw	6
015	A2435C-1 Pipe clamp	22
016	Cover plate	1
017	Pipe joint	1
018	M8×1 Tee	1
019	φ 4 ( M8×1 ) × 200 Oil pipe	1
020	L5P-M Hand pump	1
021	M6×16 Hexagon socket head cap screw	6
022	φ 19~ φ 29 Hoop	2
023	Connector	1
024	φ 13~ φ 19 Hoop	3
025	φ 20×1460 Flexible pipe	1
026	(VHF-1253-6) Pipe clamp	6
027	Handlebar	1
028	M8 Nut	2
029	M5×12 Cross recessed pan head screw	10

